

NETYS RT

SNMP/WEB Interface UPS SNMP Card

Installation and operating manual 

TABLE OF CONTENTS

1. INTRODUCTION	4
1.1 Model Differences.	4
1.2 Features.	5
1.3 System Application.	5
2. FIRST INSTALLATION.	6
2.1 First Installation.	6
2.2 Trouble Shooting	6
3. CONFIGURATION	8
3.1 Configuring the SNMP/WEB Interface by EzSetting	8
3.2 Configuring the SNMP/WEB Interface through COM Port	9
3.3 Configuring the SNMP/WEB Interface through Telnet	9
3.4 Text Mode Configuration	10
3.5 User Manager	10
3.6 System Configuration	11
3.7 SNMPv1 Access Control	12
3.8 SNMP Trap	12
3.9 Time Server	12
3.10 Wake On LAN	13
3.11 Upgrade Firmware	13
3.12 Soft Restart	13
3.13 Reset All To Default	13
3.14 Exit Without Save	13
3.15 Save And Exit	13
4. MANAGING SNMP/WEB INTERFACE	14
4.1 Running the Web Browser Internet Explorer	14
4.2 UPS Shutdown Schedule	14
4.3 UPS Shutdown actions	14
4.4 Wake-on-Lan (WOL)	14
4.5 Email Notification	15
4.6 SNMP Access Control Setting	15
4.7 Updating UPS SNMP Device Firmware from Windows	15
5. SPECIFICATION	16
5.1 Technical Specification	16
5.2 PIN Assignment	16
5.3 DIP Switch Definition	16
5.4 LED Indicator	16

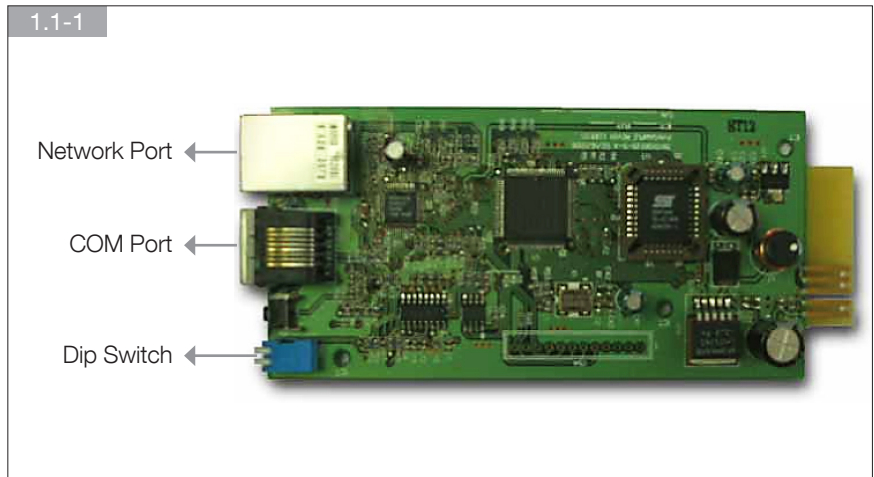
1. INTRODUCTION

1.1 Model Differences

There are 2 models for SNMP card: One is SNMP/WEB Interface SNMP card with golden finger connector, the other one is mini SNMP card. Their outlines are as the following:

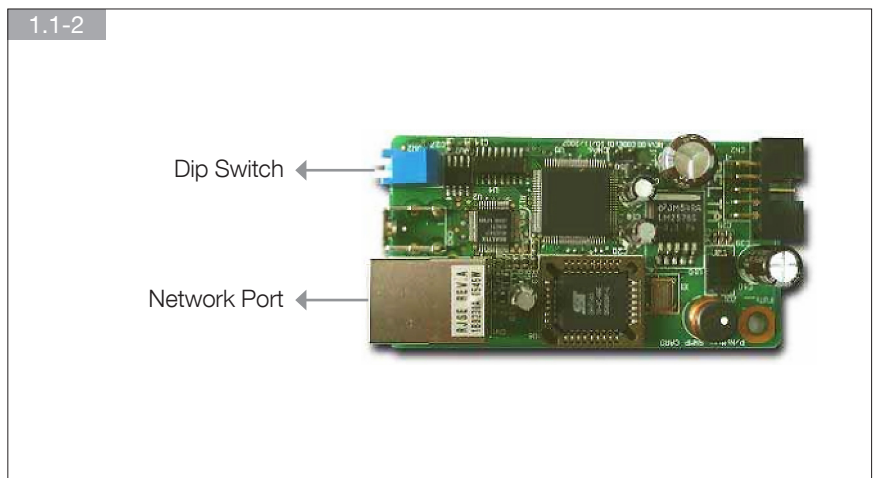
- **SNMP/WEB Interface SNMP Card**

There is an additional COM port for SNMP/WEB Interface SNMP card with golden finger. This COM port is used to do the configuration or connect to a environmental sensor box.



- **mini SNMP Card**

Due to the limitation of PC board size, mini SNMP card has no COM port; other than that, the other features are all the same.



The settings of Dip Switch are different, too. In the normal mode, SNMP/WEB Interface SNMP card needs to set the dip switches to the OFF position but the mini SNMP card needs to set to the ON position.

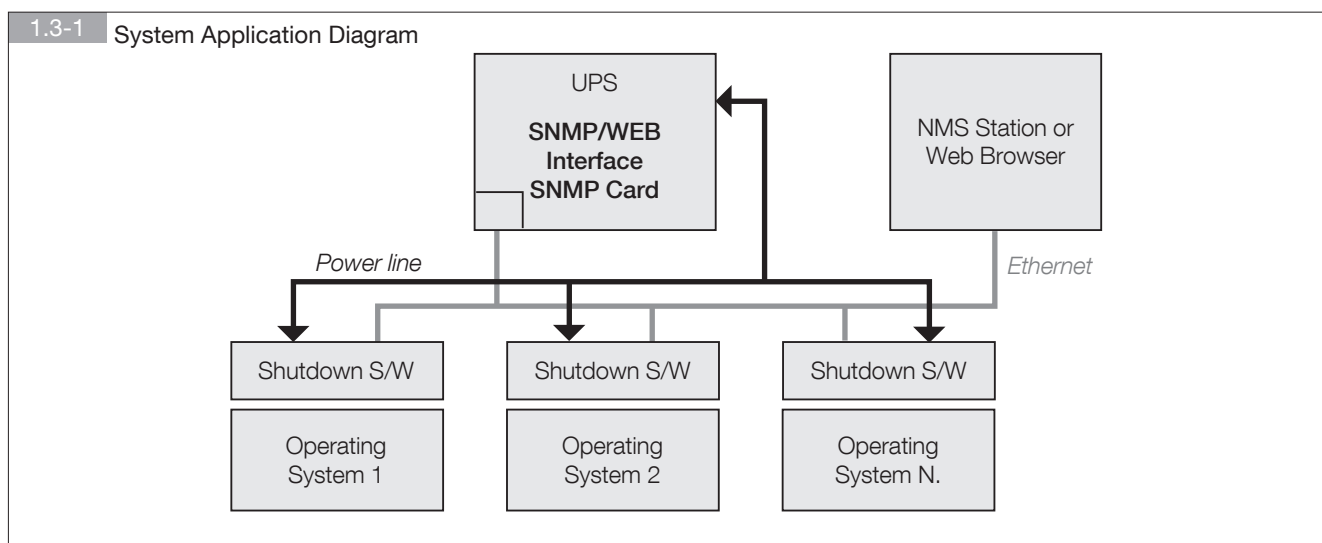
1.2 Features

- **Network connection through RJ45 connector**
Allows connection of the UPS directly to the ethernet network through a RJ45 connector without using RS232 ports on the computer and without loading any individual UPS management software on the network server.
 - **Network UPS management**
Allows remote management of the UPS from any workstation through Internet or Intranet.
 - **Remote UPS monitoring via SNMP, HTTP**
Allows monitoring of the UPS using MIB (Management Information Base), Internet Browser.
 - **Configure UPS and system functions from any client (password protected)**
Set UPS and system parameters from any SNMP management station or through Internet Browsers using HTTP forms and objects.
 - **Keep event logs & metering data in EEPROM**
Provides a history data of UPS power events, power quality, UPS status and battery condition.
 - **Multiple server shutdown**
The shutdown software included provides automatic shutdown either pre-programmed by administrator or when critical power events.
- ... also
- **Notification of users via SNMP Traps and e-mail through SMTP**
 - **Network Time Protocol supported**
 - **Telnet support for configuration**
 - **BOOTP/DHCP supported**
 - **NetBIOS Name Service supported**
 - **MD5 HTTP security**

1.3 System Application

SNMP/WEB Interface is an interface between UPS and the network. It can obtain the status from a UPS and issue commands to it. SNMP/WEB Interface supports two kinds of protocol – SNMP and HTTP for user access. Through the SNMP NMS and Web Browser, user can obtain the UPS status, issue commands to UPS and setting up SNMP/WEB Interface through the network.

SNMP/WEB Interface also provides shutdown software for various OS. The shutdown software that runs under various OS can link to SNMP/WEB Interface automatically through the network and communicate with SNMP/WEB Interface via SNMP protocol. The shutdown software retrieves UPS information from SNMP/WEB Interface. Shutdown software will then proceed to the shutdown process in order to prevent the abnormal shutoff of host or server due to power events.



2. FIRST INSTALLATION

2.1 First Installation

Please check your network environment, if there is a **BOOTP/DHCP** server in your LAN then begin from step 1, otherwise start from step 9.

1. Connect the SNMP/WEB Interface device in your LAN.
2. Open the internet browser and link to the SNMP/WEB Interface device by typing the default host name “**SNMP/WEB Interface**” in the address edit box.
3. Login as administrator with “**admin**” account and “**password**” for default password.
4. Open the “User Manager” page to manage your accounts and passwords.
5. There is a limitation in the “**User Manager**” page to restrict the login users to login in the same LAN or not. Select “**Only in This LAN**” option to restrict this login account can only login in the same LAN with the SNMP card, selecting “**Allow Any**” allows this account to login from anywhere.
6. Switch to the “**System Configuration**” page and change the default Host Name.
7. Configure the IP address, Subnet Mask, Gateway IP for SNMP/WEB Interface device. If there is no DNS server then you need to assign IP address for mail server if you want to be notified e-mail.
8. We recommend you to disable the BOOTP/DHCP option and assign a valid static IP address.
9. Open the “**Time Server**” page to synchronize the SNMP/WEB Interface device and time server. Please refer to next section on how to construct your SNTP server.

If you have no BOOTP/DHCP server in your LAN then follow belows:

10. Make sure both of the SNMP/WEB Interface device and your workstation are in the same LAN.
11. Open **EzSetting** from CD, and refer to next chapter for configuring SNMP/WEB Interface by **EzSetting**.
12. You need to change the Host Name, IP Address,...
13. Because there is no BOOTP/DHCP server in your network environment, you need to disable BOOTP/DHCP option in the System Configuration group.
14. Please refer to next Chapter “Configuring the SNMP/WEB Interface by EzSetting” section for more detail information on configuring the SNMP/WEB Interface in an easy way.

2.2 Trouble Shooting

1. How to provide a SNTP(Simple Network Timer Protocol) server for SNMP/WEB Interface?

Answer: Install the “Simple TCP/IP Services” of “Networking Services” from “Add/Remove Windows Components”. You may need a Windows CD while installing.

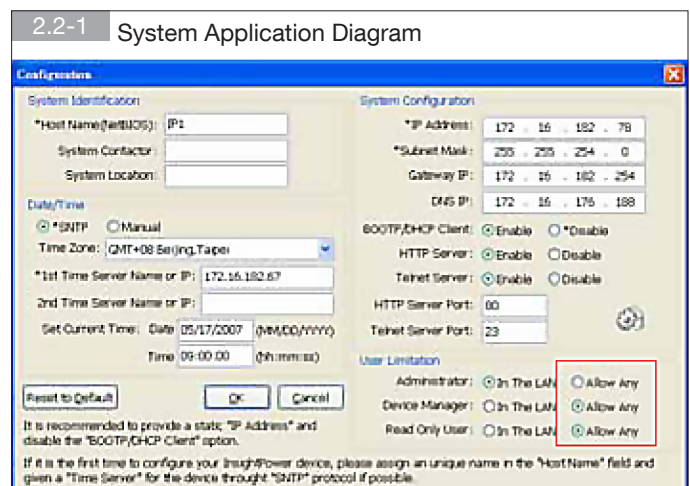
Don't forget to provide the IP address of the host in the Time Server page.

2. How to make sure the network connection is established between my workstation and SNMP/WEB Interface?

Answer: Check the networking connection by typing the following command “ping *HostName or IP*” from your workstation.

3. In the browser, I can see the “Login” page but cannot login?

Answer: Please check the IP addresses of the SNMP card and the PC which you try to login. If both of the IP addresses are not in the same LAN then please run the EzSetting utility to configure the User Limitation to Allow Any.



4. How to refresh the NetBIOS table in Windows operating system?

Answer: Sometimes the IP address of SNMP/WEB Interface will be changed but keep the same host name, although Windows will update its NetBIOS table periodically but we can force it to purge its cache immediately by typing the following command "nbtstat -R. After that you can connect to the SNMP/WEB Interface by its host name.

5. How to get the IP address and MAC address from my computer?

Answer: In Windows system, please type "ipconfig /all" in DOS prompt. For Unix system please use "ifconfig" in the shell.

6. Unable to ping or connect to the adapter.

Answer: 1. Check all network connections.

2. Ensure that your PC and the SNMP/WEB Interface are on the same network segment. (If you don't have a router, this must be true.)
3. It may be that your "arp table" contains invalid entries. You can clear the "arp table" by rebooting, or by typing the following command at the command prompt or *Run* dialog box.: arp -d
4. You can connect to the SNMP/WEB Interface ONLY if your PC and the SNMP/WEB Interface are using IP Addresses from the same address block. Normally, private LANs use IP Addresses from ONE of the following blocks, which are reserved for this purpose:
 - 10.0.0.0 ~ 10.255.255.255
 - 172.16.0.0 ~ 172.31.255.255
 - 192.168.0.0 ~ 192.168.255.255

The SNMP/WEB Interface's default IP address (192.168.1.100) is from the last block. If your LAN is using a different address block, then you will NOT be able to connect to the UPS Adapter via the LAN.

In this case, your choices are:

- Use Terminal Mode configuration to set the SNMP/WEB Interface's IP Address.
- Use the TCP/IP *arp* utility to provide a (temporary) IP Address to the SNMP/WEB Interface.
- Change your PC's IP Address to allow connection via the LAN.

7. Unable to perform SNMP get operations.

Answer: Check the SNMP settings stored in the SNMP/WEB Interface. The IP Address of the PC you are using must be entered in one of the SNMP Access Control NMS IP fields, with Read or Read/Write permission. The Community String on the PC and SNMP/WEB Interface must match.

8. Unable to perform SNMP set operations.

Answer: Check the SNMP settings stored in the SNMP/WEB Interface. The IP Address of the PC you are using must be entered in one of the SNMP Access Control NMS IP fields, with Read/Write permission. The Community String on the PC and UPS Adapter must match.

9. Unable to receive traps at your management station.

Answer: Check the SNMP Trap settings in the SNMP/WEB Interface. The IP Address of the PC you are using must be entered in one of the Target IP fields. The Community String on the PC and SNMP/WEB Interface must match.

10. Forget the administrator's account and password.

Answer: Connect the configuration cable in console port and set both of the DIP-switches of SNMP/WEB Interface to ON position (configuration mode) and key in the "radmin" while the account and password are prompted in 30 seconds. Now the account and password of administrator are reset to default values.

3. CONFIGURATION

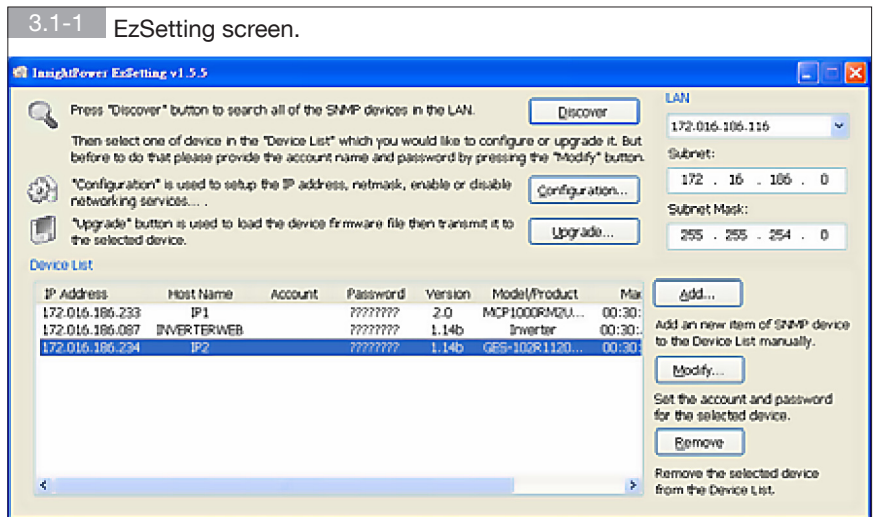
The easiest way to configure the SNMP/WEB Interface is running EzSetting, you can find the software in the CD. Please see below sub-section for more information.

If you have configured the essential network parameters successfully, you can launch the internet browser or telnet to the device which you just assigned to do detail configuration. The first thing is to open the User Manager page and change your accounts and passwords.

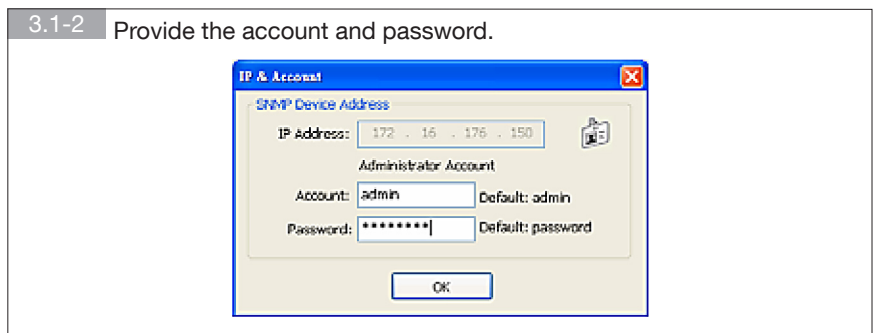
3.1 Configuring the SNMP/WEB Interface by EzSetting

1. Prepare a workstation (Microsoft Windows 9x, Me, NT4.0, 2000, 2003, XP or later installed).
2. Make sure both the DIP-switches of SNMP/WEB Interface to OFF position (default: normal mode) to enable network transmission.
3. Make sure the workstation and SNMP/WEB Interface device are in the same LAN.
4. Put the provided CD in the CD-ROM drive and find the SNMP/WEB Interface EzSetting then launch it.

5. Press the Discover button to search all of the UPS in the LAN. All of the UPS SNMP DEVICE will be listed in the Device List. (See 3.1-1)
If you want to search the SNMP/WEB Interface devices in a different domain and subnet mask addresses then press the Discover button to list them. 1. Prepare a workstation (Microsoft Windows 9x, Me, NT4.0, 2000, 2003, XP or later installed).



6. If the SNMP/WEB Interface device can not be found, check the networking port UDP 3456 in the OS. Open it if it is blocked.
7. Select the device in the device list to configure the network parameters then press the Modify button to provide your account and password. The default account and password are **admin** and **password**. (See 3.1-2)



8. Click on the Configuration button and setup the essential network parameters. (See 3.1-3)

3.1-3 Configure the system parameters.

The screenshot shows a 'Configuration' window with the following sections:

- System Identification:**
 - *Host Name(NetBIOS): IP2
 - System Contactor: []
 - System Location: []
- Date/Time:**
 - *SNTP Manual
 - Time Zone: GMT+08 Beijing,Taipei
 - *1st Time Server Name or IP: 172.16.186.116
 - 2nd Time Server Name or IP: []
 - Set Current Time: Date 07/26/2006 (MM/DD/YYYY)
 - Time 12:00:00 (hh:mm:ss)
- System Configuration:**
 - *IP Address: 172 . 16 . 186 . 234
 - *Subnet Mask: 255 . 255 . 254 . 0
 - Gateway IP: 172 . 16 . 106 . 254
 - DNS IP: 172 . 16 . 176 . 100
 - BOOTP/DHCP Client: Enable *Disable
 - HTTP Server: Enable Disable
 - Telnet Server: Enable Disable
 - HTTP Server Port: 80
 - Telnet Server Port: 23
- User Limitation:**
 - Administrator: In The LAN Allow Any
 - Device Manager: In The LAN Allow Any
 - Read Only User: In The LAN Allow Any

Buttons: Reset to Default, OK, Cancel

It is recommended to provide a static "IP Address" and disable the "BOOTP/DHCP Client" option.
If it is the first time to configure your InsightPower device, please assign a unique name in the "Host Name" field and given a "Time Server" for the device through "SNTP" protocol if possible.

3.2 Configuring the SNMP/WEB Interface through COM Port

1. Prepare a workstation (Microsoft Windows 9x, Me, NT4.0, 2000, 2003, XP or later installed).
2. Use the RJ45 to DB9 serial cable that provided from package connect between the SNMP/WEB Interface COM port and the COM port on the workstation.
3. Set both the DIP-switches of the SNMP/WEB Interface device to OFF position (normal mode).
4. From the workstation running Microsoft Windows (9x, Me, NT4.0, 2000, 2003, XP or later), and click on the *HyperTerminal* icon of the accessory programs group.
5. Enter a name and choose an icon for the connection.
6. Select direct COM port connection.
7. Setup the COM port parameters - 2400 bps, 8 data bits, no parity, 1 stop bit and no flow control.
8. Set both the DIP-switches of the SNMP/WEB Interface to **ON** position (configuration mode). Messages will then are displayed on the screen; afterwards, key in the administrator account (default account is admin) and password (default password is password). The SNMP/WEB Interface configuration utility main menu will be displayed on the screen. Please refer to the Text Mode Configuration section for more information.

3.3 Configuring the SNMP/WEB Interface through Telnet

1. Connect the SNMP/WEB Interface to the network.
2. Prepare a workstation (Microsoft Window, Max OSX or Linux installed) which is connected to the same LAN.
3. Make sure both the DIP-switches of the SNMP/WEB Interface to OFF position (normal mode).
4. From the Windows workstation running DOS Prompt and type "*telnet HostName or IP*" to open the telnet connection with SNMP/WEB Interface. For other operating system user, please run the OS shell and type the same command as in the DOS prompt.
5. Messages will then are displayed on the screen; afterwards, key in the administrator account (default account is **admin**) and password (default password is **password**). The SNMP/WEB Interface configuration main menu will be displayed on the screen. Please refer to the Text Mode Configuration section for more information.

Note: SNMP/WEB Interface will terminate the telnet connection if there is no data transmission in 1 minute.

3.4 Text Mode Configuration

3.4-1 SNMP/WEB Interface Main menu.

UPS Web Card Main Menu

UPS Web Version 1.0

- [1] . User Manager
- [2] . System Configuration
- [3] . SNMP Access Control
- [4] . SNMP Trap
- [5] . Time Server
- [6] . Mail Server
- [7] . Wake On LAN
- [8] . Upgrade Firmware
- [9] . Soft Restart
- [a] . Reset All To Default
- [b] . Reset Hub To Default
- [z] . Exit Without Save
- [0] . Save And Exit

Please Enter Your Choice > 1

3.5 User Manager

3.1-5 SNMP/WEB Interface User Manager menu.

User Manager

Administrator

- [1] . Account: admin
- [2] . Password: *****
- [3] . Limitation: Only in This LAN

Device Manager

- [4] . Account: device
- [5] . Password: *****
- [6] . Limitation: Only in This LAN

Read Only User

- [7] . Account: user
- [8] . Password: *****
- [9] . Limitation: Limitation: Only in This LAN
- [0] . Back to Previous Menu

Please Enter Your Choice >

No.	Function	Description	Default
1.	Administrator Account	Administrator gets the whole rights to modify the SNMP/WEB Interface and UPS setting	"admin"
2.	Administrator Password		"password"
3.	Administrator Limitation	Restrict login area of the administrator user	Only this LAN
4.	Device Account	Device Manager is permitted to change the network setting but has not the ability to configure the UPS settings.	"device"
5.	Device Password		"password"
6.	Device Limitation	Restrict login area of the device manager	Only this LAN
7.	User Account	Read Only User can observe the UPS information only.	"user"
8.	User Password		"password"
9.	User Limitation	Restrict login area of the general user	Only this LAN

3.6 System Configuration

3.6-1 System Configuration menu.	
System Configuration	
[1] . IP Address:	192.168.001.100
[2] . Subnet Mask:	255.255.255.000
[3] . Gateway IP:	192.168.001.254
[4] . DNS IP:	192.168.001.001
[5] . BOOTP/DHCP Client:	Enable
[6] . HTTP Server:	Enable
[7] . Telnet Server:	Enable
[8] . FTP Server:	Enable
[9] . HTTP Server Port:	80
[a] . Telnet Server Port:	23
[b] . SNMP Get,Set Port:	161
[c] . SNMP Trap Port:	162
[d] . Host Name(NetBIOS):	SNMP/WEB Interface
[e] . System Contactor:	
[f] . System Location:	
[g] . Status Stable:	3
[0] . Back To Previous Menu	
Please Enter Your Choice >	

No.	Function	Description	Default
1.	IP Address	The SNMP/WEB Interface IP address.	192.168.001.100
2.	Subnet Mask	The sub-net m ask setting.	255.255. 255.000
3.	Gateway IP	The network default gateway.	192.168.001.254
4.	DNS IP	Domain Name Server IP address	192.168.001.001
5.	BOOTP/DHCP Client	Enable/Disable BOOTP/DHCP protocol	Enable
6.	HTTP Server	Enable/Disable HTTP protocol	Enable
7.	Telnet Server	Enable/Disable telnet protocol	Enable
8.	FTP Server	Enable/Disable FTP protocol For batch configuration purpose	Enable
9.	HTTP Server Port	HTTP networking port	80
a.	Telnet Server Port	Telnet networking port	23
b.	SNMP Get,Set Port	SNMP polling and response port	161
c.	SNMP Trap Port	SNMP trap port	162
d.	Host Name(NetBIOS)	Host name for Windows	SNMP/WEB Interface
e.	System Contactor	Alphanumeric string	
f.	System Location	Alphanumeric string	
g.	Status Stable	Status change confirmation check time	3

3.7 SNMPv1 Access Control

If you wish to use a workstation with SNMP Manager installed, or if you wish to set more restrictive SNMP/WEB Interface access, you can use the access table to add the IP address of the PC's on which you wish to modify the access permissions. (Figure 3.7-1).

The index 01 is a special design for all read only workstations. SNMP/WEB Interface checks community string first to identify the incoming packet is read only or not. If they are identical then SNMP/WEB Interface responses the inquiring value.

3.7-1 SNMP Access Table.			
SNMP Access Table			
Index	NMS IP	Community	Permission
[1] 01	Other SNMP NMSs	public	Read Only
[2] 02	172.016.176.141	SNMP/WEB Interface	Read/Write
[3] 03	000.000.000.000	Not Access	
[4] 04	000.000.000.000	Not Access	
[5] 05	000.000.000.000	Not Access	
[6] 06	000.000.000.000	Not Access	
[7] 07	000.000.000.000	Not Access	
[8] 08	000.000.000.000	Not Access	
[0]	. Back to Previous Menu		
Please Enter Your Choice >			

3.8 SNMP Trap

If you want to use a PC and perform the SNMP manager 'trap' function in order to manage UPS through SNMP/WEB Interface, the IP address of the PC must be added to the SNMP Trap list.

The Event Level field is used to decide what kind of power events should be send to the target address. There are 3 levels of power events: Information, Warning and Severity. If you select the Information then all of the power events will be send to the target IP address, warning level will send the Warning and Severity events to the target address.

3.8-1 SNMP Trap.			
SNMP Trap			
Index	Target IP	Community	Event Level
[1]	172.016.176.142	SNMP/WEB Interface	Information
[2]	172.016.176.143	private	Warning
[3]	172.016.176.144	public	Severity
[4]	000.000.000.000	None	
[5]	000.000.000.000	None	
[6]	000.000.000.000	None	
[7]	000.000.000.000	None	
[8]	000.000.000.000	None	
[0]	. Back to Previous Menu		
Please Enter Your Choice >			

3.9 Time Server

There are 2 ways to provide current time and date to SNMP/WEB Interface, one is set the system time manual but it is not an ideal way. If the SNMP/WEB Interface card is removed, data and time settings will be lost.

The other one and ideal way is setup a time server for SNMP/WEB Interface, SNMP/WEB Interface supports SNTP which MS Windows XP has been supported.

Instead of that, you need to install the Simple TCP/IP Services from Add/Remove Windows Components.

3.9-1 Time Server.	
Time Server	
[1] . Time Selection:	SNTP
[2] . Time Zone:	-8 hr
[3] . 1st Time Server:	172.016.176.141
[4] . 2nd Time Server:	jesse-tri
[5] . Manual Date:	01/01/2000 (MM/DD/YYYY)
[6] . Manual Time:	00:00:00 (hh:mm:ss)
[0]	. Back to Previous Menu
Please Enter Your Choice >	

3.10 Wake On LAN

SNMP/WEB Interface supports the magic packet to wakeup workstations in 2 conditions: power restore or system startup with a delay time.

3.10-1 Setting Trap Receivers.			
Wake On LAN			
Index	MAC Address	Delay	Trigger Conditions
[1]	00-0c-08-34-4d-57	001	(Power Restore) (System Startup)
[2]	00-00-00-00-00-00	000	
[3]	00-00-00-00-00-00	000	
[4]	00-00-00-00-00-00	000	
[5]	00-00-00-00-00-00	000	
[6]	00-00-00-00-00-00	000	
[7]	00-00-00-00-00-00	000	
[8]	00-00-00-00-00-00	000	
[0] . Back to Previous Menu			
Please Enter Your Choice >			

3.11 Upgrade Firmware

SNMP/WEB Interface supports TFTP Client protocol for upgrading new version firmware. You need a TFTP server or just run the EzSetting in the CD to upgrade the firmware.

3.11-1 Upgrade Firmware.	
Upgrade Firmware	
[1] . TFTP Server IP:	172.016.176.141
[2] . Upgrade Now	
[0] . Back to Previous Menu	
Please Enter Your Choice >	

3.12 Soft Restart

Simply restart the SNMP/WEB Interface.

3.13 Reset All To Default

Clear all of the settings in EEPROM.

3.14 Exit Without Save

Exit and disregard the changes.

3.15 Save And Exit

Preserve your changes in EEPROM and exit.

4. MANAGING SNMP/WEB INTERFACE

4.1 Running the Web Browser Internet Explorer

1. Make sure that you have a TCP/IP network already installed.
2. If there is no DHCP network service on the network, contact your network administrator to get an IP address for you workstation that has the same network's address as the SNMP/WEB Interface IP address. **The default IP address of SNMP/WEB Interface is 192.168.1.100.**
3. Start your Web Browser. Enter the URL "http://host_name" or "http://ip_address" in the address box. The SNMP/WEB Interface will then ask for your account and password, input the correct account and password then UPS management Web home page will be shown on the screen.
4. If the Login web page can be displayed but unable to login with the correct account and password. The reason may caused by the IP address where you login is different with the SNMP card IP address, please refer to Chapter2 Trouble Shooting.

Note: SNMP/WEB Interface will logout user automatically if there is no data transmission through HTTP connection more than 30 minutes.

4.2 UPS Shutdown Schedule

SNMP/WEB Interface device supports two kinds of shutdown schedule – (1) Weekly Schedule; (2) Special Day Schedule. Set both of these options to plan your UPS schedule shutdown and restart time.

If your SNMP/WEB Interface device needs to work with shutdown software to protect your servers which are powered by the UPS and you want to control the schedule shutdown and restart from SNMP/WEB Interface device then please visit the Configure page and enable the "Schedule" option.

Note: Before managing the UPS Shutdown Schedule, please make sure that the Date and Time configured in SNMP/WEB Interface is correct.

4.3 UPS Shutdown actions

SNMP/WEB Interface responds to 6 different kinds of UPS shutdown events (AC failed, Battery Low , UPS overload, UPS over-temperature, On ByPass, Imminent Stop). Go to the Configure in the UPS Management menu. Logging in as an Administrator. Set the options in UPS Shutdown Action section then press the Submit button. To test the configuration, please use the test section to simulate the power fail and the power restore event.

Note: Once SNMP/WEB Interface detects there is at least one shutdown software running, the event-driven shutdown would be canceled.

4.4 Wake-on-Lan (WOL)

The Wake-on-Lane feature allows the administrator to remotly power up all sleeping machines configured once a system start-up or a power restore event occurs. Please check the BIOS settings and enable WOL option. Then go to the Wake On LAN page in the Network menu. Please note that this feature should only available for the servers in the same LAN with SNMP/WEB Interface device.

4.5 Email Notification

This page describing of UPS email notification setting to let administrator configure Mail server and Mail receivers in order to receive notification or report from SNMP/WEB Interface by email once power event was occurred.

1. SMTP Server Name or IP

This item is the Hostname of a SMTP Mail Server that will be used to send email messages from the SNMP/WEB Interface. If entering a Hostname, you are also required to enter the DNS IP in the System Configuration.

2. Sender Mail Address

This item is the e-mail sender address in the following format: name@company.com.

3. Password

This item is the password of Mail Server. Default has no entry, and only required if Mail Server needed for authentication to send mail.

4. Receiver

This column is for entering the email address of the individual you wish the SNMP/WEB Interface to send mail to.

5. Event Level

This item is for selecting the Severity level of notification you wish to send to each Mail Receiver configured to be sent Mail Type: Events or Events/Status.

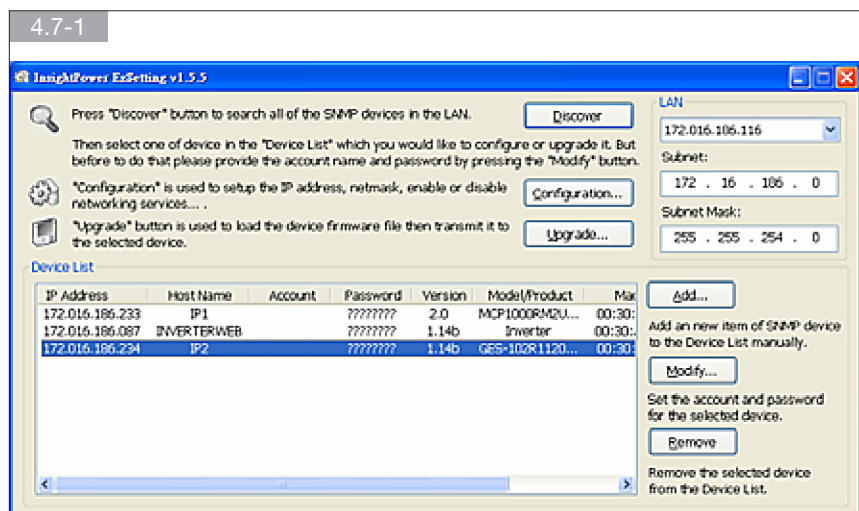
4.6 SNMP Access Control Setting

SNMP/WEB Interface supports SNMP protocol. You can use SNMP NMS to manage UPS through the network. The IP address of the workstation must be entered in the SNMP/WEB Interface write access table to prevent unauthorized users from configuring SNMP/WEB Interface via SNMP protocols.

4.7 Updating UPS SNMP Device Firmware from Windows

To perform firmware upgrade, use the **EzSetting.exe** program on the CD-ROM. This program is compatible with Windows operating system.

- 1. Device List:** Displays the addresses of the UPS SNMP DEVICE present in the local network.
- 2. Discover:** Search for the SNMP/WEB Interface devices in the local network.
- 3. Add:** Lets you add the IP address of an UPS to the Device List manually.
- 4. Modify:** Lets you modify the parameters of the device selected in the Device List.
- 5. Remove:** Removes the selected device from the Device List.
- 6. Configuration:** Provides an easy way to do the initial configuration through networking UDP port 3456. If you cannot get the device information please check and open the UDP port from your OS.
- 7. Upgrade:** Sends the program loaded with the Browse button to the selected device of the Device List.



5. SPECIFICATION

5.1 Technical Specification

Network Connection	RJ-45 jack connector
Operating Temperature	0 ~ 40° C
Operating Humidity	10 ~ 80 %
Power Input	9~24V DC
Power Consumption	1 Watt Maximum
Size	130 mm x 60 mm (L x W)
Weight	58 g

5.2 PIN Assignment

Bottom Side		Component Side	
Pin 1	GND	Pin 2	DC (9-24V)
Pin 3	Txd→UPS	Pin 4	Rxd←UPS
Pin 5	NC	Pin 6	NC
Pin 7	NC	Pin 8	NC
Pin 9	NC	Pin 10	NC
Pin 11~25	NC	Pin 12~26	NC

5.3 DIP Switch Definition

Golden finger SNMP card:

No.	SW1	SW2	Function Mode
1.	ON	ON	Console Configuration Mode
2.	ON	OFF	For Environmental Sensor
3.	OFF	ON	Pass Through Mode
4.	OFF	OFF	Normal Mode

Mini SNMP card:

No.	SW1	SW2	Function Mode
1.	ON	ON	SNMP Normal Mode, the UPS doesn't response to its RS232 port
2.	OFF	OFF	SNMP Stop Mode, PC can communicate with the UPS through its RS232 port

5.4 LED Indicator

No.	Yellow LED	Green LED	Function Mode
1.	Flashing (0.2 sec)	ON	Normal operation
2.	Flashing (1 sec)	ON	UPS Disconnect
3.	---	OFF	Hardware or network error

Socomec UPS worldwide

IN EUROPE

BELGIUM

Schaatsstraat, 30 rue du Patinage
B - 1190 Bruxelles
Tel. +32 (0)2 340 02 34
Fax +32 (0)2 346 16 69
be.ups.sales@socomec.com

FRANCE

95, rue Pierre Grange
F - 94132 Fontenay-sous-Bois Cedex
Tel. +33 (0)1 45 14 63 90
Fax +33 (0)1 48 77 31 12
ups.paris.dcm@socomec.com

GERMANY

Heppenheimerstraße 57
D - 68309 Mannheim
Tel. +49 (0) 621 71 68 40
Fax +49 (0) 621 71 68 44 4
de.ups.all@socomec.com

ITALY

Via Leone Tolstoj, 73 - Zivido
20098 San Giuliano Milanese (MI)
Tel. +39 02 98 242 942
Fax +39 02 98 240 723
siconmi@socomec.com

NETHERLANDS

Bergveste 2F
NL - 3992DE Houten
Tel. +31 (0)30 63 71 504
Fax +31 (0)30 63 72 166
nl.ups.sales@socomec.com

POLAND

Nowowiejska St 21/25
00-665 Warszawa
Tel. +48 (0)22 2345 223
Fax +48 (0)22 2345 223
ups.poland@socomec.com

PORTUGAL

Rua Moinho do Cuco
Bloco A
Lj. Dta. - Paz
2640-566 MAFRA
Tel. +351 261 812 599
Fax +351 261 812 570
portugal@socomec.com

RUSSIA

Kutuzovsky pr. 13, 44-45
121248 - Moscow
Tel. +7 495 775 19 85
Fax +7 495 775 19 85
ups.russia@socomec.com

SLOVENIA

Savlje 89
SI - 1000 Ljubljana
Tel. +386 1 5807 860
Fax +386 1 5611 173
si.ups.info@socomec.com

SPAIN

C/Nord, 22 Pol. Ind. Buvisa
E - 08329 Teià (Barcelona)
Tel. +34 935 407 575
Fax +34 935 407 576
info@socomec-aron.com

UNITED KINGDOM

Units 7-9 Lakeside Business Park
Broadway Lane - South Cerney
Cirencester - GL7 5XL
Tel. +44 (0)1285 863300
Fax +44 (0)1285 862304
uk.ups.sales@socomec.com

IN ASIA

CHINA

No.1 Yuanda Road Haidian District, Beijing, 100097
Golden Resource Times Shopping Mall
No. 1001 section B the 2nd issue of business building
Tel. +86 10 8889 2202
Fax +86 10 8889 2150
socomec@socomec.com.cn

INDIA

B1, 1Ind Floor, Thiru-Vi-Ka-Industrial Estate
Guindy
Chennai - 600 032
Tel. +91 44 3921 5400
Fax +91 44 3921 5450 - 51
sales@socomec-ups.co.in

MALAYSIA

31 Jalan SS 25/41- Mayang Industrial Park
47301 Petaling Jaya.- Selangor, Malaysia
Tel. +603 7804 1153
Fax +603 7803 8901
sales@cspm.com.my

SINGAPORE

31 Ubi Road 1, Aztech Building
01-00 (Annex) - SG - Singapore 408694
Tel. +65 6745 7555
Fax +65 6458 7377
sg.ups.sales@socomec.com

THAILAND

No.9 Soi Vibhavadirangsit 42
Vibhavadirangsit Rd., Ladyao
Chatujak Bangkok 10900
Tel. +66 2 941-1644-7
Fax. +66 2 941-1650
info@socomec-th.com

HEAD OFFICE

SOCOMEK GROUP

S.A. SOCOMEK capital 11 102 300 € - R.C.S. Strasbourg B 548 500 149
B.P. 60010 - 1, rue de Westhouse - F-67235 Benfeld Cedex

SOCOMEK UPS Strasbourg

11, route de Strasbourg - B.P. 10050 - F-67235 Huttenheim Cedex- FRANCE
Tel. +33 (0)3 88 57 45 45 - Fax +33 (0)3 88 74 07 90
ups.benfeld.admin@socomec.com

SOCOMEK UPS Isola Vicentina

Via Sila, 1/3 - I - 36033 Isola Vicentina (VI) - ITALY
Tel. +39 0444 598611 - Fax +39 0444 598622
info.it.ups@socomec.com

SALES, MARKETING AND SERVICE MANAGEMENT

SOCOMEK UPS Paris

95, rue Pierre Grange
F-94132 Fontenay-sous-Bois Cedex - FRANCE
Tel. +33 (0)1 45 14 63 90 - Fax +33 (0)1 48 77 31 12
ups.paris.dcm@socomec.com



IOMNETRTXX02-GB 01 01.2010

www.socomec.com

Non contractual document. © 2008, Socomec SA. All rights reserved.



socomec
Innovative Power Solutions **UPS**